

28th ANNUAL CONFERENCE

**UNIVERSITY OF GEORGIA
ATHENS, GA**

SATURDAY

OCTOBER 19, 2024

9:00AM-10:00AM
CHECK-IN & RESOURCE FAIR
Tate Student Center - 5th floor

10:00AM-11:00AM
WELCOME & KEYNOTE
Tate Grand Hall

11:00AM-11:10AM
BREAK

11:10AM-12:10PM
PRESENTATION BLOCK 1
Tate Meeting Rooms - 1st floor

12:10PM-1:10PM
LUNCH
Tate Grand Hall

1:10PM-1:20PM
BREAK

1:20PM-2:20PM
PRESENTATION BLOCK 2
Tate Meeting Rooms

2:20PM-2:30PM
BREAK

2:30PM-3:30PM
PRESENTATION BLOCK 3
Tate Meeting Rooms

3:30PM-4:30PM
CLOSING SOCIAL
Tate South Lawn

PRESENTATION TRACKS

CL COMMUNITY ENGAGEMENT

P PERSONAL LEADERSHIP

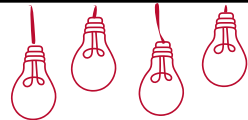
C COLLABORATIVE LEADERSHIP

W WELL-BEING

I INCLUSIVE LEADERSHIP

PL PEER LEADERSHIP

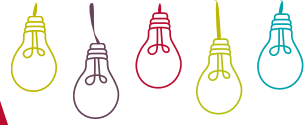
COMMUNITY PARTNER DRIVE



Bigger Vision of Athens is a community shelter serving people in Athens, Georgia and surrounding communities. Bigger Vision provides individuals with a safe bed, two meals, a shower, laundry services, essential supplies, hygiene items, and community resources. Bigger Vision also works to help people meet long-term needs and achieve housing stability. Their vision is that everyone in Athens has a safe, affordable home.

WELCOME & KEYNOTE

10:00AM-11:00AM
TATE GRAND HALL



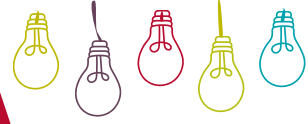
KEYNOTE ADDRESS

Sarah McKinney, President & CEO of Athens Area Community Foundation

Sarah is a UGA alumna who began serving the Athens Area Community Foundation as President & CEO in 2017. Starting as an intern during college at the Athens Community Council on Aging, Sarah has years of experience in giving back to the community we love. Through it all, Sarah emphasizes the importance of relationships as the foundation of leadership and the positive ripple effects these relationships have in our beloved community.

PRESENTATION BLOCK 1

11:10AM-12:10PM



THE ALLY STUDENT LEADER **I**

Dr. John Alvarez Turner, Director of the Pride Center
Regan Wells, President of Q-Stone

Tate 137

The Ally Student Leader workshop is a dynamic, one-hour overview designed for student leaders who are eager to strengthen their role as allies for the LGBTQIA+ community on campus.

UMATTER: AN UPSTANDER INTERVENTION PROGRAM **CL PL W**

Bethany Hight, Interpersonal Violence Prevention and Well-Being Coordinator

Tate 138

Step into this 60 minute interactive upstander intervention program where participants will gain the knowledge and skills to take action when they see someone in need.

FROM SHELTER TO SUCCESS: BIGGER VISION'S APPROACH TO SUPPORTING THE HOMELESS COMMUNITY **CL I**

Ryan Hersh, Executive Director of Bigger Vision Community Shelter of Athens

Tate 140

Join us for a presentation on the Bigger Vision of Athens Community Shelter where the Executive Director will highlight our comprehensive approach to supporting the unsheltered through immediate relief and the transformative Abundant Life transitional housing program.

EMPOWERING DIVERSE VOICES: BUILDING A CULTURE OF EXCELLENCE, INCLUSIVITY, AND SERVANT LEADERSHIP **C I PL**

Trey Wilson, Black Male Leadership Society

Tate 141

This presentation is an interactive workshop that blends expert insights and practical exercises to build a culture of excellence, inclusivity, and servant leadership among emerging and seasoned student leaders.

LEADING THROUGH CHALLENGES: COMMUNICATION STRATEGIES TO SUPPORT OTHERS C PL W

Gabby Buttry, AOD Prevention Coordinator

Tate 142

Refine your communication skills using motivational interviewing techniques, enabling you to guide others through change, implement policy, and solve problems effectively. By enhancing these skills, leaders can better support their peers and advance their organizations.

CLIFTONSTRENGTHS 101 P

Lori Crawford, Director of Engagement, Leadership, and Service

Tate 473

Bring your Top 5 Strengths to learn about your natural talents and how they influence your leadership style.

LEADERSHIP BEYOND THE NORM: CULTIVATING COMMUNITY WITHIN UNIQUE ACADEMIC PATHS PL

Katie Baumeister, OSSA Peer Educator

Tate 480

Explore how student leaders on non-traditional paths can utilize self-reflection to empower others and build diverse, supportive networks on campus.

LUNCH

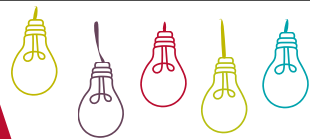
12:10PM-1:10PM

TATE GRAND HALL



PRESENTATION BLOCK 2

1:20PM-2:20PM



BULLDOGS NEVER BARK ALONE: THE POWER OF MENTORSHIP CL

Bethany Bagwell, Shirleyse Haley, Kydae Scott, Geoffrey Loften, UGA Mentor Program

Tate 137

Join a panel of mentors representing the different affinity councils of UGA. Moderated by the Director of the UGA Mentor Program, this session will start with mentor introductions, move into a facilitated discussion, and wrap-up with a Q&A from the audience.

RURAL VOICES AT UGA: STRENGTHENING CONNECTIONS AND COMMUNITY ENGAGEMENT CL

Brooklyn Potter & Molly Roberts, ALL Georgia Program

Tate 138

Rural Student Ambassadors from the ALL Georgia program will educate participants on rurality & emphasize the importance of engaging the existing rural community at UGA.

MORE THAN MEETS THE EAR C I P

Ailey Gustafson, Arch Society & Fontaine Peer Educator

Tate 140

Explore the valuable communication lessons we can learn from the Deaf community and learn how these insights can enhance leadership and foster more inclusive environments.

A TASTE FOR CULTURE I

Nareem Al-Shurafa & Madhavraj Premkumar,

Tate 141

Learn how embracing global comfort foods can turn leadership into a flavorful journey of empathy and inclusivity.

“FROM NOW ON”: LESSONS IN INCLUSIVE LEADERSHIP FROM THE GREATEST SHOWMAN I

Mackenzie White, Senior Coordinator for Student Transitions

Tate 142

Explore the key principles of inclusive leadership through the lens of P.T. Barnum’s journey in the hit movie, “The Greatest Showman”.

LEADING WELL: INTEGRATING WELL-BEING AS A LEADER W

Courtney Brown, Assistant Director for Student Engagement & Data Management

Tate 473

Learn how leaders can create supportive teams and foster healthier environments by integrating well-being into their leadership practices.

HOW TO BE AN INTROVERTED LEADER PL

Bodhi Martin, Minority Student Science Association

Tate 480

This presentation outlines how to be an introverted leader, the importance of introverted leaders, and why more introverted people should embrace the title of “leader”.

PRESENTATION BLOCK 3

2:30PM-3:30PM



THE POWER OF PLACE: LEADING THROUGH COMMUNITY-BASED HISTORIC PRESERVATION CL C

Michelle Nguyen & Denise Sunta, Historic Athens Welcome Center

Tate 137

Using real-world examples from Historic Athens, this session will show how saving and celebrating local history revitalizes neighborhoods, fosters community pride, and empowers diverse voices.

DEVELOPING YOUR SERVICE-MINDEDNESS CL P

Erica Little, Assistant Director for Community Engagement

Tate 138

Learn about the values-based integration of personal accountability, critical self-reflection, and mutually beneficial relationships for the purpose of sustained improvement in one's community.

EFFECTIVE WAYS TO CONNECT WITH DIFFERING PERSONALITIES

Eshita Jain & Andrea Sherman, OSSA Peer Learning Assistants C PL

Tate 140

This interactive presentation equips student leaders with strategies to effectively engage with diverse personalities, especially more reserved individuals, through discussions, self-assessment, and hands-on exercises to foster a more inclusive campus environment.

CONFLICT MANAGEMENT: ANIMAL STYLE C PL

Ivan Zheng, OSSA Peer Learning and Teaching Others

Tate 141

Learn how to apply strategies when handling conflict through a different method: animals!

WINNING WITH WELLNESS: CREATING HEALTHY HABITS & AUTHENTIC RELATIONSHIPS W

Katie Walsh & Jennifer Sharpe, University Housing

Tate 142

This session will empower leaders to prioritize personal well-being by providing practical tools and meaningful insights that guide participants to lead with compassion, resilience, and genuine care.

NEW DAWGS TEACHING NEW TRICKS P

Reinhart Tumpalan, Senior Program Coordinator for MSP

Tate 473

Stepping into the professional sphere as a recent graduate can be intimidating and confusing. This session aims to help young adults transition into new roles and find the confidence to be a good leader in an unfamiliar role and space.

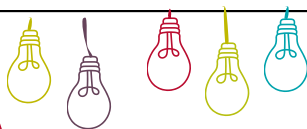
GLOBAL LEADERSHIP I PL

Natalie Kenny-Hall & Maggie Zou, Senior Coordinators for ISL

Tate 480

Explore strategies for being an inclusive leader in today's interconnected world.

CLOSING SOCIAL
3:30PM-4:00PM
TATE SOUTH LAWN



Have a sweet treat, network with others, and win exciting prizes!



SPECIAL THANKS TO OUR SPONSORS



Belonging Initiatives
UNIVERSITY OF GEORGIA



Disability Resource Center
Student Affairs
UNIVERSITY OF GEORGIA



Well-Being Resources
UNIVERSITY OF GEORGIA

THANK YOU FOR ATTENDING THE 28TH ANNUAL STUDENT LEADERSHIP CONFERENCE!

You will receive an email with a link to a brief survey about your experience.
We invite you to provide your feedback.



**Engagement, Leadership,
and Service**
Student Affairs
UNIVERSITY OF GEORGIA

